

SPEC:

A. Material:

1. Housing: PA66

2. Terminal: COPPER ALLOY, TIN PLATED

B. Electrical Characteristics:

1. Rating: 15A 250V~ (UL,CUL)

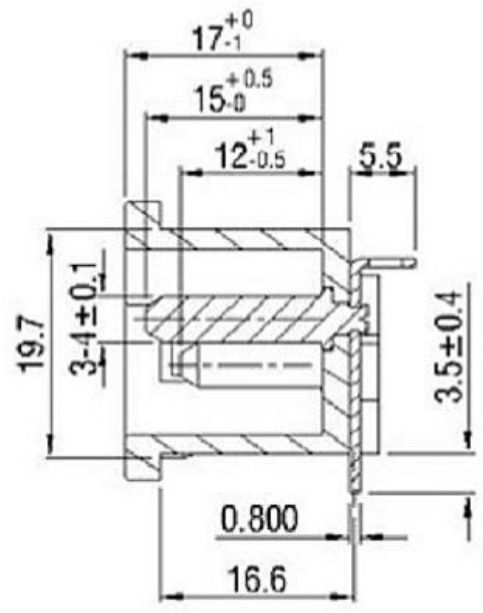
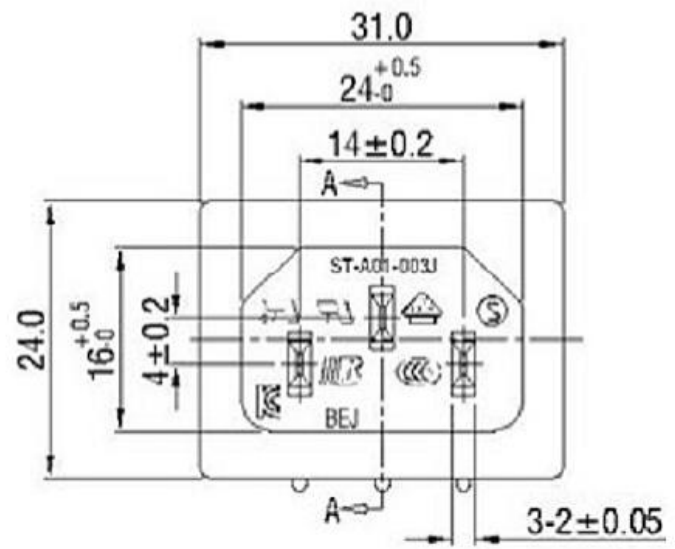
10A 250V~ (CCC,VDE,SEMKO)

2. Electric Strength: AC 2,000 V FOR ONE MINUTE

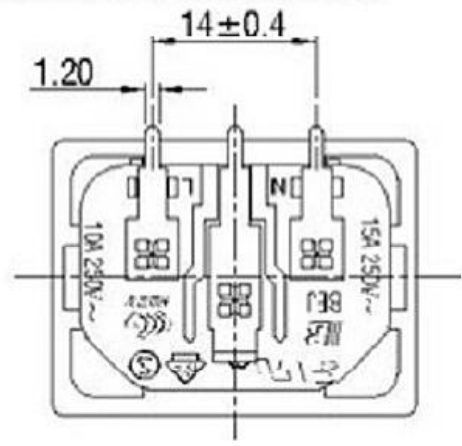
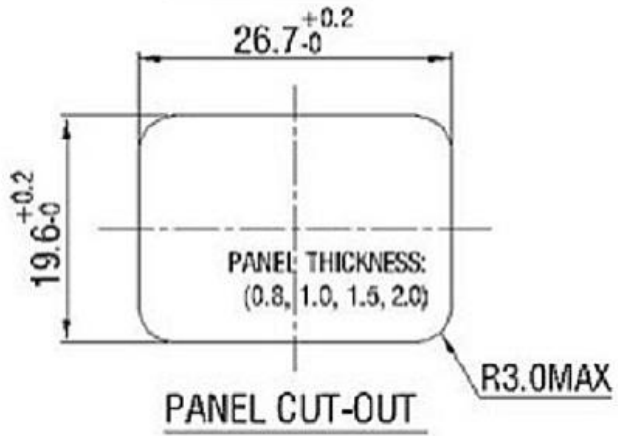
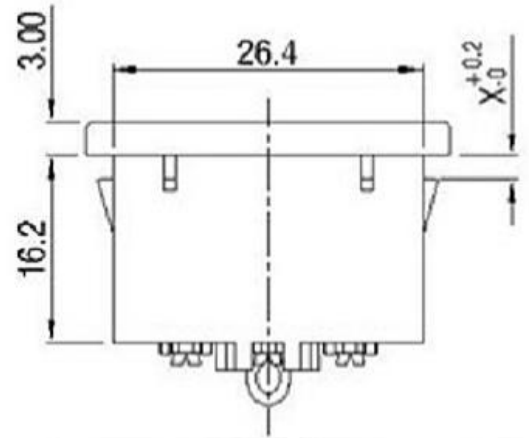
3. Insulation Resistance: 100MΩ MIN, AT 500V DC

C. Approvals:

UL, CUL, CCC, VDE, SEMKO, KC



SECTION: A-A



Part No.:	DIM. X
ST-A01-003JYT-S33(0.8HP)	0.9
ST-A01-003JYT-S33(1.0HP)	1.1
ST-A01-003JYT-S33(1.5HP)	1.6
ST-A01-003JYT-S33(2.0HP)	2.1

普通公差

COMMON TOLERANCE :

UP TO 5	±0.20
ABOVE 5 TO 30	±0.30
ABOVE 30	±0.50
ANGULAR	±5°



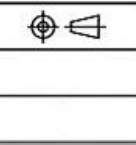
东莞市高迪电子有限公司

REV.	DATE	REVISION DESCRIPTION	ISSUE

单位
mm
绘图
林晓良
日期
19.08.12

投影
核
核
核

品名
AC POWER JACK
型号
料号
KD-AC电源插座



品名
AC POWER JACK
型号
料号
KD-AC电源插座

品名
AC POWER JACK
型号
料号
KD-AC电源插座